



SHINE
Shanti Greeno

GOTANAGAR, MALIGAON



**2-3
BHK
FLATS**

RERA NO.- ARERAKMPPROJ2017-86

APPROVED BY



About Shine Realtors

Shine Realtors Private Limited launches their new project "Shine Shanti Greeno" amidst a quaint and sylvan piece of land surrounded by luxuriant green trees on a hilly terrain of Gotanagar, in the city of Guwahati. Catering to the concept of healthy living, it emerges as the homely abode for the connoisseurs of good living.

Site Location

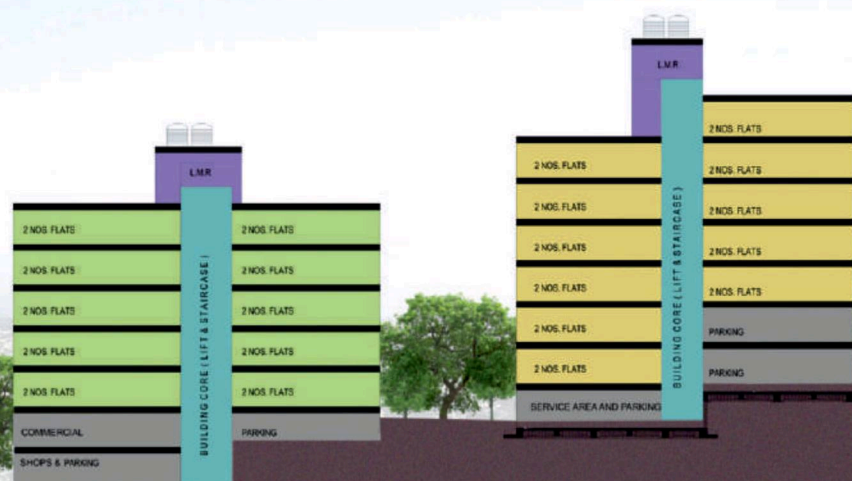
Gotanagar is a pollution free and flood free zone. The project lies in the middle of the connecting road between Maligaon and NH 37. The plot is located on connecting Tetelia road, which has access to NF Railway headquarters, Maligaon on one side and NH 37 on the other side.

Distance

St. Mary's Convent, Maligaon	1 km
Heritage Public School	200 m
Royal Group of Institutions	11 km
Hotel Radisson Blu	1.5 km
Kamakhya Railway Station	2 km
Jalukbari Chowk	2 km
Assam Engineering College	4.8 km
Sanjeevani Hospital	4.3 km
LGBI Airport	16 km
Rupnath Brahma ISBT	11 km
NF Railway Headquarters	3.2 km

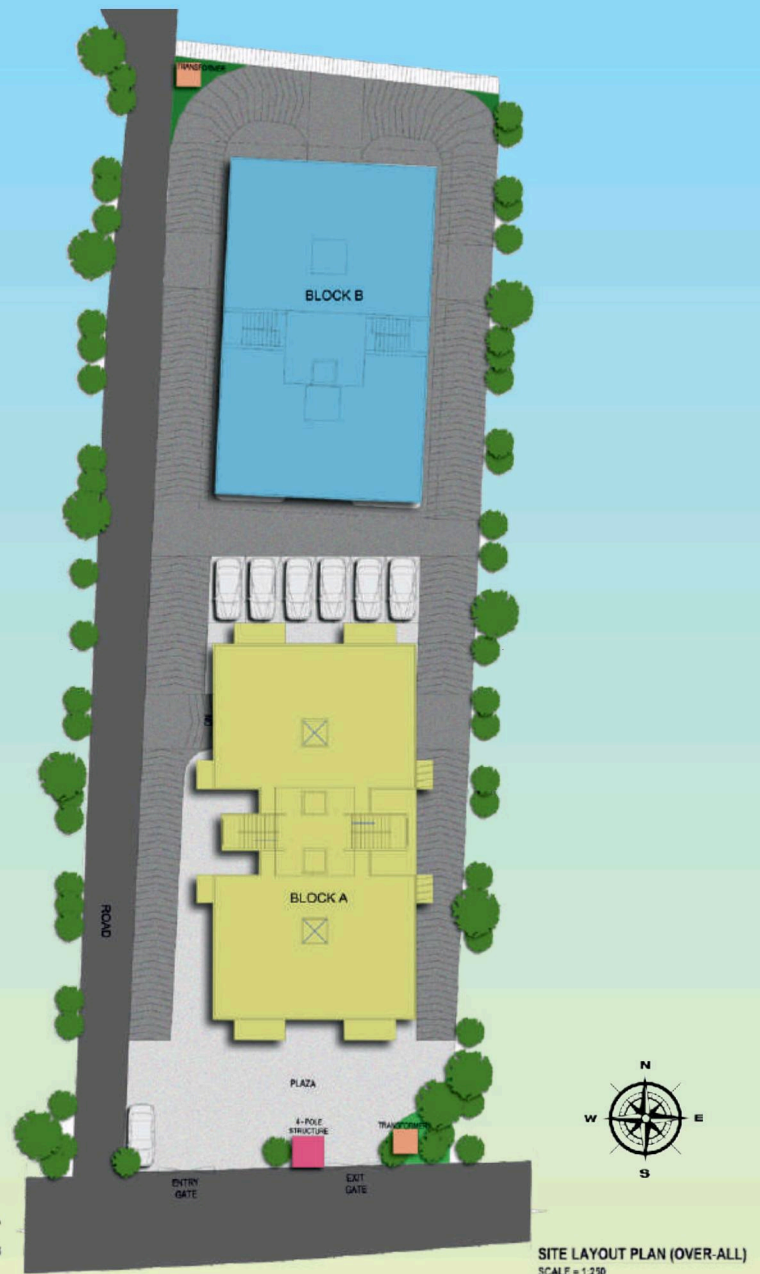


Site Section



Site Plan

- ✂ The site is on a sloping gradient land.
- ✂ All apartments are two side open and the two blocks are sufficiently spaced to ensure sunlight and air flow.
- ✂ The lush green atmosphere make this a great place to live in nature's lap within city limits.



■ BLOCK A
■ BLOCK B

Specifications

- ✂ The structure will be earthquake resistant
- ✂ Putty finished wall
- ✂ Concealed electric wiring with modular switches
- ✂ Wooden doorframe with flush door shutters
- ✂ Sliding aluminium anodised windows with glass shutters
- ✂ Vitrified tile flooring in bedroom, living cum dining room and common areas
- ✂ The kitchen will have ceramic tile flooring, granite counter top with stainless steel sink and ceramic tiles up to 2 feet above granite top
- ✂ The toilet will have non skid ceramic tiles on floor and designers tiles upto door height on wall, hot and cold water provisions in all bathrooms with CP fittings high quality
- ✂ Waterproofing
- ✂ Designed for better airflow and breeze
- ✂ Vastu compliant
- ✂ Generator for common areas
- ✂ One lift of reputed make
- ✂ Intercom facility

Floor Layout

BLOCK B

Rear block has all units of 2 BHK to give our customers an option to fit their need and budget.



*ALL DIMENSIONS ARE IN FEET & INCH

FLAT A

SUPER BUILT UP AREA: 1098
CARPET AREA: 770
BALCONY: 68

FLAT B

SUPER BUILT UP AREA: 1098
CARPET AREA: 770
BALCONY: 68

FLAT C

SUPER BUILT UP AREA: 1125
CARPET AREA: 791
BALCONY: 68

FLAT D

SUPER BUILT UP AREA: 1125
CARPET AREA: 791
BALCONY: 68

*All Areas are in Square Feet



Price Details

Price on Request

- ✂ Our Pricing structure is dynamic due to changing market demands and government regulations
- ✂ Please request our sales representatives for exact pricing for the flat of your choice
- ✂ We strive to keep our homes in the affordable range without any compromise in quality

Financial Assistance

- ✂ This project is approved by leading financial institutions
- ✂ Financing of up to 85% of total cost can be done by home loans at low interest rates
- ✂ We have tie-ups with the banks and can assist you in the home loan process

Payment Plan (12% GST Extra)

Booking Amount - 1,00,000+taxes

Agreement - within 7 days of booking
(15% for construction cost - Booking Amount)

On Completion of foundation (10%)

On Ground Floor roof casting (10%)

On 1st Floor roof casting (10%)

On 2nd Floor roof casting (10%)

On 3rd Floor roof casting (10%)

On 4th Floor roof casting (10%)

On final roof casting (10%)

On Brick work & plastering (10%)

On delivery/possession of the Unit (5%)